



CCK Series

IN-LINE BELT DRIVEN CABINET FAN

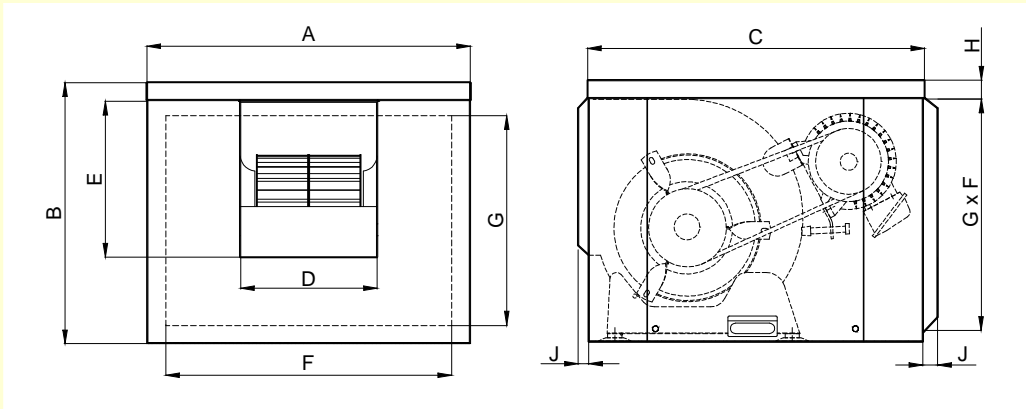


In-Line Belt Drive Cabinet Fan – CCK Series



- Cabinet is manufactured in galvanised sheet steel.
- Incorporates a belt driven DIDW forward curved centrifugal fan.
- Removable access panel on both sides to allow easy accessibility to fan and motor.
- Flanged inlet and outlet for easy ductwork connection.
- Suitable for 90° orientation.
- Please refer to '**KRUGER**' catalogue – KAT Series – for performance details.

Dimensions

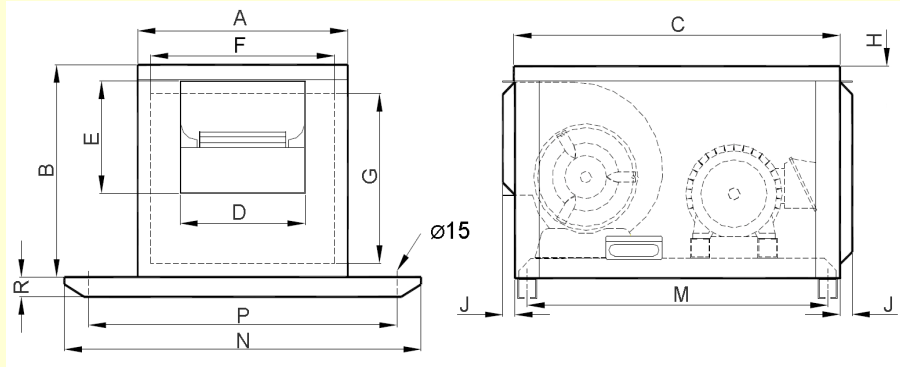


All Dimension in mm.

Model	A	B	C	D	E	F	G	H	J	Weight (Kg)	Performance Range			
											Air Volume (m ³ /h)	S.P (Pa)	Max. Inst kW	Max. Motor Framesize
CCK 7/7	440	402	487	263	232	240	344	31.5	25	14	200 - 2500	100 - 700	0.55	D71
CCK 8/8	500	442	557	291	260	300	384	32.5	25	17	500 - 3200	100 - 950	1.1	D80
CCK 9/7	550	440	567	236	266	348	382	32.5	25	19	300 - 2600	100 - 1250	1.1	D80
CCK 9/9	550	440	567	302	266	348	382	32.5	25	20	700 - 3500	100 - 800	1.1	D80
CCK 10/8	610	520	617	269	293	410	462	32.5	25	23	600 - 3300	100 - 1550	2.2	D90L
CCK 10/10	610	520	617	335	293	410	462	32.5	25	24	2000 - 4100	100 - 1000	2.2	D90L
CCK 12/9	710	605	777	313	345	510	547	32.5	25	33	2300 - 4500	100 - 1350	2.2	D90L
CCK 12/12	710	605	777	399	345	510	587	32.5	25	35	2800 - 5800	100 - 850	2.2	D90L
CCK 15/11	850	660	817	377	408	650	602	35	25	42	3800 - 7000	100 - 1600	2.2	D90L
CCK 15/15	850	660	817	475	408	650	602	35	25	45	4800 - 9600	100 - 750	2.2	D90L
CCK 18/13	1000	801	967	434	402	800	743	36	25	60	5000 - 10000	100 - 950	2.2	D90L
CCK 18/18	1000	801	967	561	402	800	743	36	25	68	6700 - 13000	100 - 750	2.2	D90L

* Weight without motor and drive transmission.

Dimensions



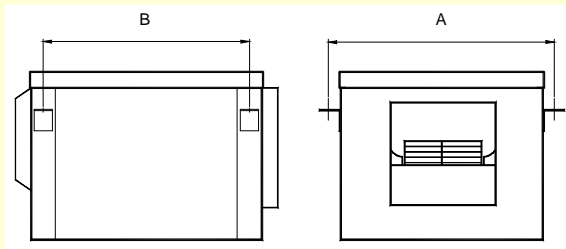
All Dimension in mm.

Model	A	B	C	D	E	F	G	H	J	M	N	P	R	Weight (Kg)	Performance Range			
															Air Volume (m3/h)	S.P (Pa)	Max. Inst KW	Max. Motor Framesize
CCK 7/7 L	440	430	679	263	232	240	372	31.5	25	624	740	640	40	27	1200-3000	100-800	1.5	D90L
CCK 8/8 L	500	472	732	291	260	300	414	32.5	25	679	800	700	40	31	1500-3500	100-1000	2.2	D100L
CCK 9/7 L	550	480	762	236	266	348	422	32.5	25	709	850	750	40	34	1200-3000	100-1300	3.0	D100L
CCK 9/9 L	550	480	762	302	266	348	422	32.5	25	709	850	750	40	35	1600-4000	100-1100	3.0	D100L
CCK 10/8 L	610	560	815	269	293	410	502	32.5	25	762	910	810	40	40.5	1500-3500	100-1500	4.0	D112M
CCK 10/10 L	610	560	815	335	293	410	502	32.5	25	762	910	810	40	41.5	2000-5200	100-1300	4.0	D112M
CCK 12/9 L	710	645	931	313	345	510	587	32.5	25	878	1010	910	40	39	2300-4500	100-1350	4.0	D112M
CCK 12/12 L	710	645	931	399	345	510	587	32.5	25	878	1010	910	40	41	2800-5800	100-850	4.0	D112M
CCK 15/11 L	850	700	1027	377	408	650	642	35	25	974	1150	1050	40	53	3800-7000	100-1600	4.0	D112M
CCK 15/15 L	850	700	1027	475	408	650	642	35	25	974	1150	1050	40	56	4800-9600	100-750	4.0	D112M
CCK 18/13 L	1000	841	1142	434	482	800	783	36	25	1089	1300	1200	40	69	5000-10000	100-950	4.0	D112M
CCK 18/18 L	1000	841	1142	561	482	800	783	36	25	1089	1300	1200	40	79	6700-13000	100-750	4.0	D112M

Accessories

Hanger

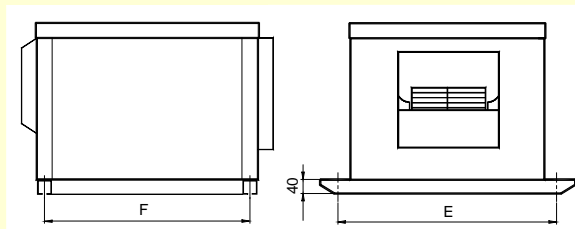
For CCK 7/7 – 10/10



Type	A	B	N°	∅
7/7	476	434	2	9
8/8	536	504	2	9
9/7	586	514	2	9
9/9	586	514	2	9
10/8	646	564	2	9
10/10	646	564	2	9

Cabinet Support

For CCK 12/9 – 18/18



Type	E	F	Type	E	F
7/7 L	640	624	12/12 L	910	878
8/8 L	700	679	15/11	1050	764
9/7 L	750	709	15/11 L	1050	974
9/9 L	750	709	15/15	1050	764
10/8 L	810	761	15/15 L	1050	974
10/10 L	810	761	18/13	1200	914
12/9	910	728	18/13 L	1200	1089
12/9 L	910	878	18/18	1200	914
12/12	910	728	18/18 L	1200	1089