



MTD-EX Series

Mixed Flow In-Line Fan - Explosion Proof



Mixed Flow In-Line Fan - Explosion Proof – MTD-EX Series

- Specifically designed for direct connection with industrial circular ducting of standard diameter in explosion proof version.
- Incorporate a powerful motor which is factory matched to a mixed flow impeller.
- Delivers high airflow performance with minimum noise generation and high static pressure typically found in ducted ventilation systems.
- Model 200 is manufactured in antistatic plastic material, models 250 to 315 are manufactured from sheet steel protected with black polyester paint coating.
- Easy installation and maintenance – support brackets allow the motor and impeller assembly to be fitted or removed without dismantling the adjacent ducting.
- Operating temperature from -20°C to 40°C.
- In accordance with ATEX 94/9/CE Directive.

For model 200:

- Increased safety $\text{Ex II2G EExellT3 EC nr. LOM 08ATEX2052X Supplement 2.}$

For models 250 to 315:

- Increased safety $\text{Ex II2G EExellT3 Gb EC nr. LOM 11ATEX2021 X Supplement 1.}$

Dimension

Model	A	B	C	ØD	E	F	G	H	I	Weight (kg)
MTD 200-EX	302	255	232.5	198	140	100	94	124	228.4	5
MTD 250-EX	386	324	291	248	168	145	140	155	339	20
MTD 315-EX	450	392	356	312	210	182	178	188	371	25

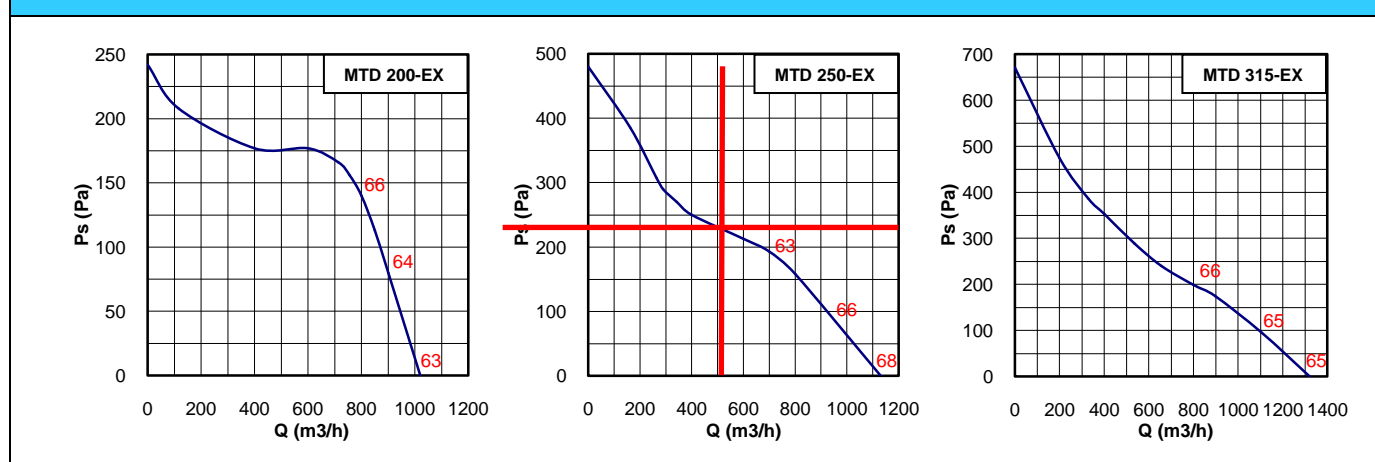
All the dimension in mm.

Technical Data

Model	Max Q m³/h	Power W	Motor Protection	Phase	N° Pole	Hz	Max. Current at 230V (A)	Insulation Class	dB (A) at 3m	RPM
MTD 200-EX	1020	130	IP 44	1	2	50	0.54	B	53	2450
MTD 250-EX	1130	197	IP 44	1	2	50	0.81	B	59	2630
MTD 315-EX	1320	170	IP 44	1	2	50	0.71	B	56	2600

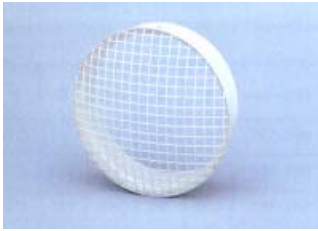
- Speed (RPM) shown is nominal. Performance is based on actual speed of test.
- Performance ratings do not include the effects of appurtenances (accessories).
- dB(A) at 3m with ducted inlet and outlet at free field conditions.

Performance Data



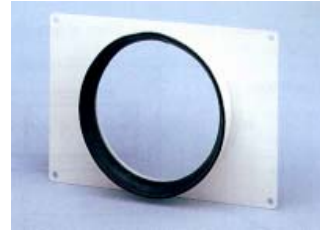
- Speed (RPM) shown is nominal. Performance is based on actual speed of test.
- Performance ratings do not include the effects of appurtenances (accessories).
- Values shown are fan inlet Lw(A) sound power level for installation type D: ducted inlet, ducted outlet. Ratings include the effect of duct and correction.

Accessories



Grilles

Mounted at the inlet or outlet of the fan, the grille prevents the entry of any foreign objects.



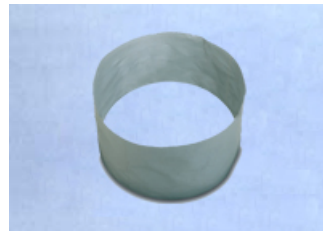
Rectangular Duct Adapters

The adapter enables the MTD-EX fan to be connected to rectangular ducting



Back-Draft Shutter

Mounted at the outlet of the MTD-EX fan, the shutter prevents the air re-circulating when the fan is not in use.



Antistatic circular flexible connector ATEX

Proof explosion flexible connection