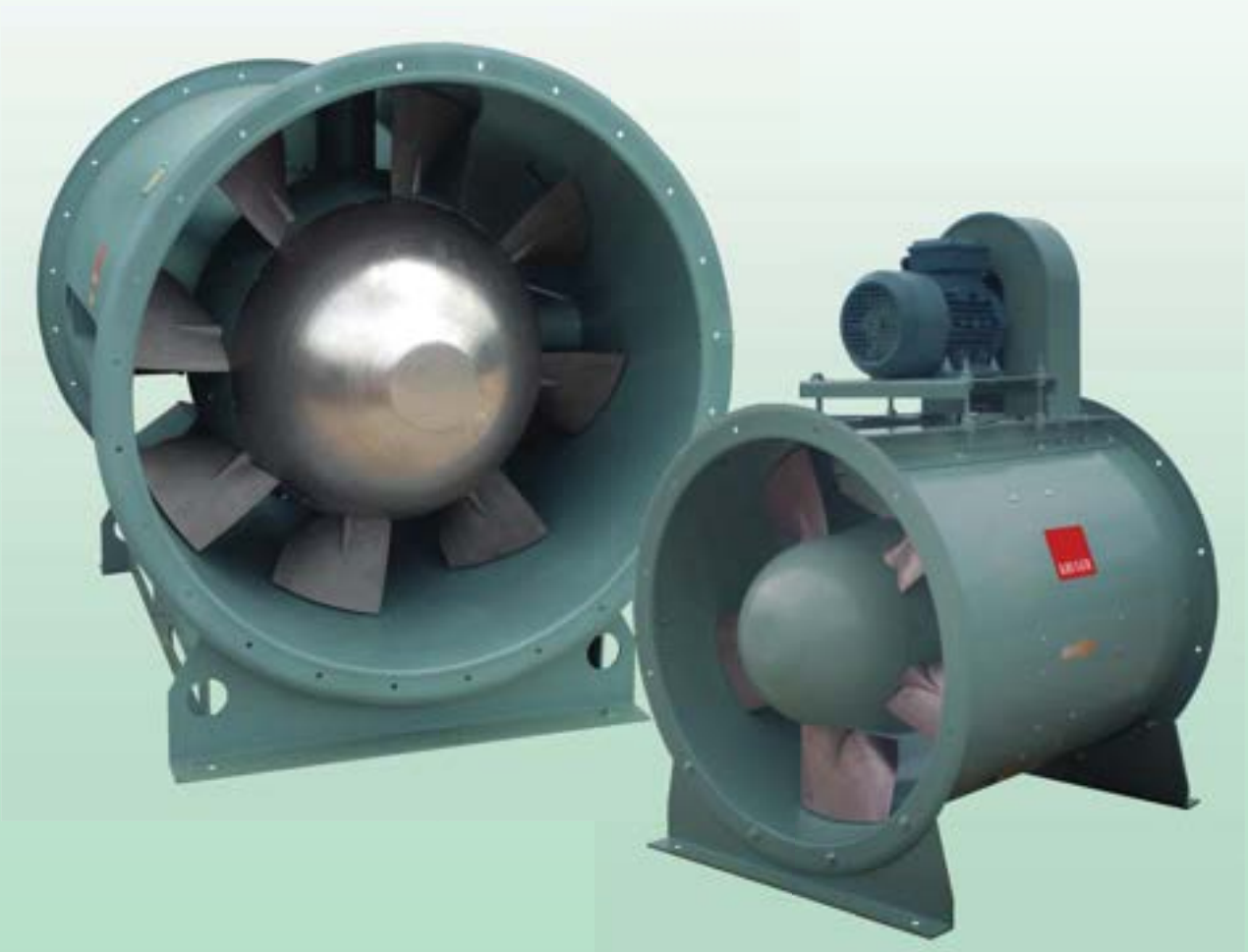




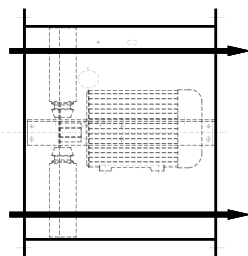
MXA Series

AXIAL MIXED FLOW FAN

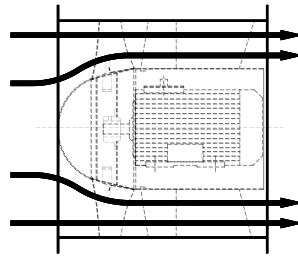


The **MXA series** features characteristic advantages of both the axial and the centrifugal type fan. These unique mixed flow fans, with aerodynamically designed impeller and vane system, lead air through the impeller in both the axial and the radial directions, developing the desired pressure characteristics similar to centrifugal fans but with an axial air path suitable for straight – through installation.

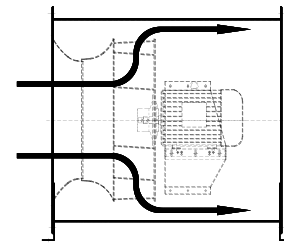
The **MXA series** has the size advantage over comparable tube-axial, vane-axial, tubular-centrifugal, and centrifugal type fans for the same duty, making the **MXA series** the ideal choice for energy-conscious commercial and industrial applications requiring high airflow volume, moderate pressure capacity, high efficiency, low noise, and compactness where installation space is a limiting criterion.



Axial



Mixed flow



Tubular Centrifugal

Certification



Kruger Ventilation Industries Asia Co., Ltd certifies that the **MXA series** shown herein is licensed to bear the AMCA Seal. The ratings shown are based on tests and procedures performed in accordance with AMCA publication 211 and AMCA Publication 311 and comply with the requirements of the AMCA Certified Ratings Program.



Certified by **TÜV SÜD** which is a leading international service organization focusing on consulting, testing, certification and training.

MXA series was tested in accordance with EN 12101-3:2002 F250, F300, F400."

Class	Temperature (°C)	Minimum functioning period (minutes)
F200	200	120
F300	300	60
F400	400	120
F600	600	60
F842	842	842
Others	250	120

Features

Application:

General ventilation and smoke extraction in various commercial and industrial applications, where moderate pressure, high efficiency, and high airflow volume with quiet operation are required. Typical applications include commercial buildings, hospitals & museums, schools & libraries, theatres & auditoriums, factories & processes, metro stations etc.

Range:

Size: 450 - 2,000
 Volume Range: 4000 - 380,000 CMH
 Pressure Capacity: 200 – 2,300 Pa

Construction:

- Aluminium blade impeller, statically and dynamically balanced to ISO 1940 and AMCA 204-05-G2.5 standard.
- All fans after assembly are trim-balanced to ISO 1940 and AMCA 204-G2.5 standard.
- Double flanged casing and rigid motor support are made of heavy gauge steel.
- Tube casing with built-in outlet guide vane.

Finish:

Painted or galvanised for steel parts finish.

Axial Mixed Flow Fan (Direct Driven & Belt Driven) – MXA



Operation Temperature:

- General ventilation: -20 to +55°C.
- Smoke exhaust system: 250°C/300°C/400°C* - 1~2 hour. (TÜV SÜD certified)
*(For high temperature (250~400°C) application please contact Kruger)

Air flow direction:

Air flow from impeller to motor.

Accessories:

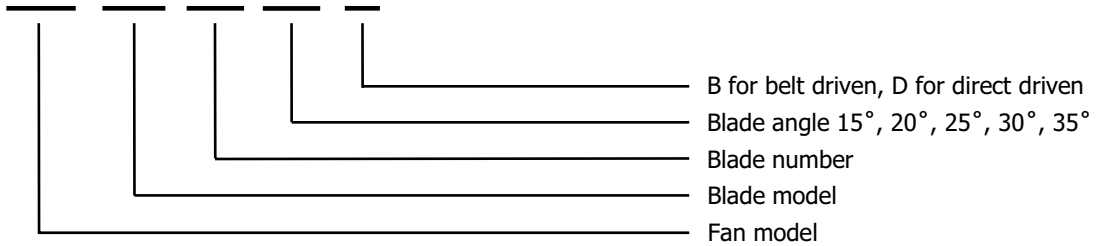
Mounting feet, hanger and other accessories can be supplied upon request.

Motor:

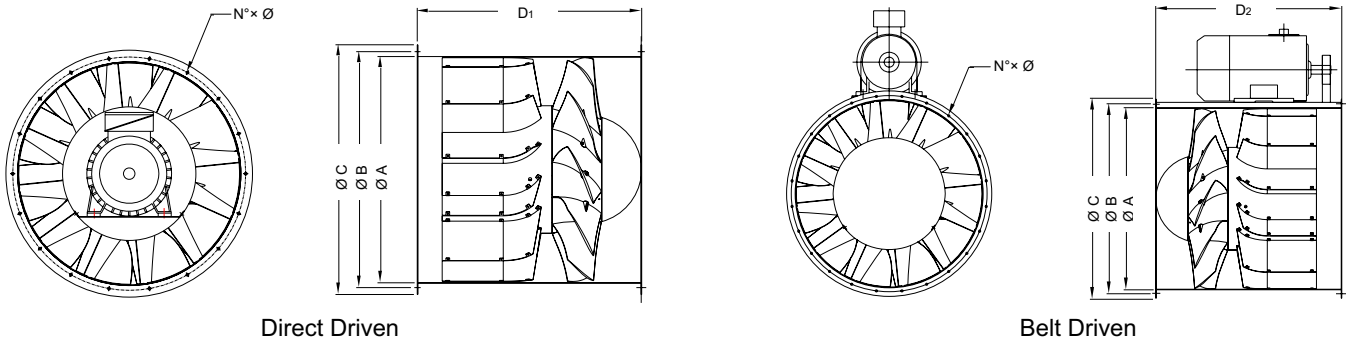
- General ventilation: Totally Enclosed Fan Cooled (TEFC), Class "F".
- Smoke exhaust system: Totally Enclosed Fan Cooled High Temperature Rated (250°C/300°C/400°C TÜV SÜD certified).

IP55 protection. Standard motors up to 2.2kW are supplied with DOL starting. Motors 3.0kW and above are with star/delta starting. Motors of other specification are available upon request.

MODEL: MXA 1120 / 25M / 9-9 / 25° / B



Dimension



Model Size	A	B	C	N	Ø	Direct Driven			Belt Driven		
						D1	Max. Motor Frame Size	Weight (kg)	D2	Max. Motor Frame Size	Weight (kg)
450	450	490	530	12	10	450	80	33	650	112	40
500	500	540	580	12	10	500	90	40	700	112	49
560	560	605	660	12	10	550	100	52	750	132	63
630	630	675	730	12	10	600	112	72	800	160	87
710	710	755	810	18	12	700	132	96	950	180	115
800	800	845	900	18	12	750	132	120	950	200	143
900	900	945	1000	18	12	900	160	160	1150	225	186
1000	1000	1050	1100	24	12	1000	180	238	1250	250	281
1120	1120	1185	1250	24	12	1050	200	303	1300	280	357
1250	1250	1315	1380	24	12	1350	280	540	1600	315	630
1400	1400	1465	1530	32	14	1650	315	791	1950	315	921
1600	1600	1663	1730	32	14	1990	355	994	2300	315	1157
1800	1800	1856	1930	32	14	1990	355	1072	2400	315	1254
2000	2000	2073	2130	32	14	2050	355	1280	2450	355	1500

- Weight without impeller, motor and drive system.
- D₁, D₂ are based on the largest motor frame size.
- Please consult KRUGER if motor frame size is beyond the catalogue range.

All dimensions in mm.